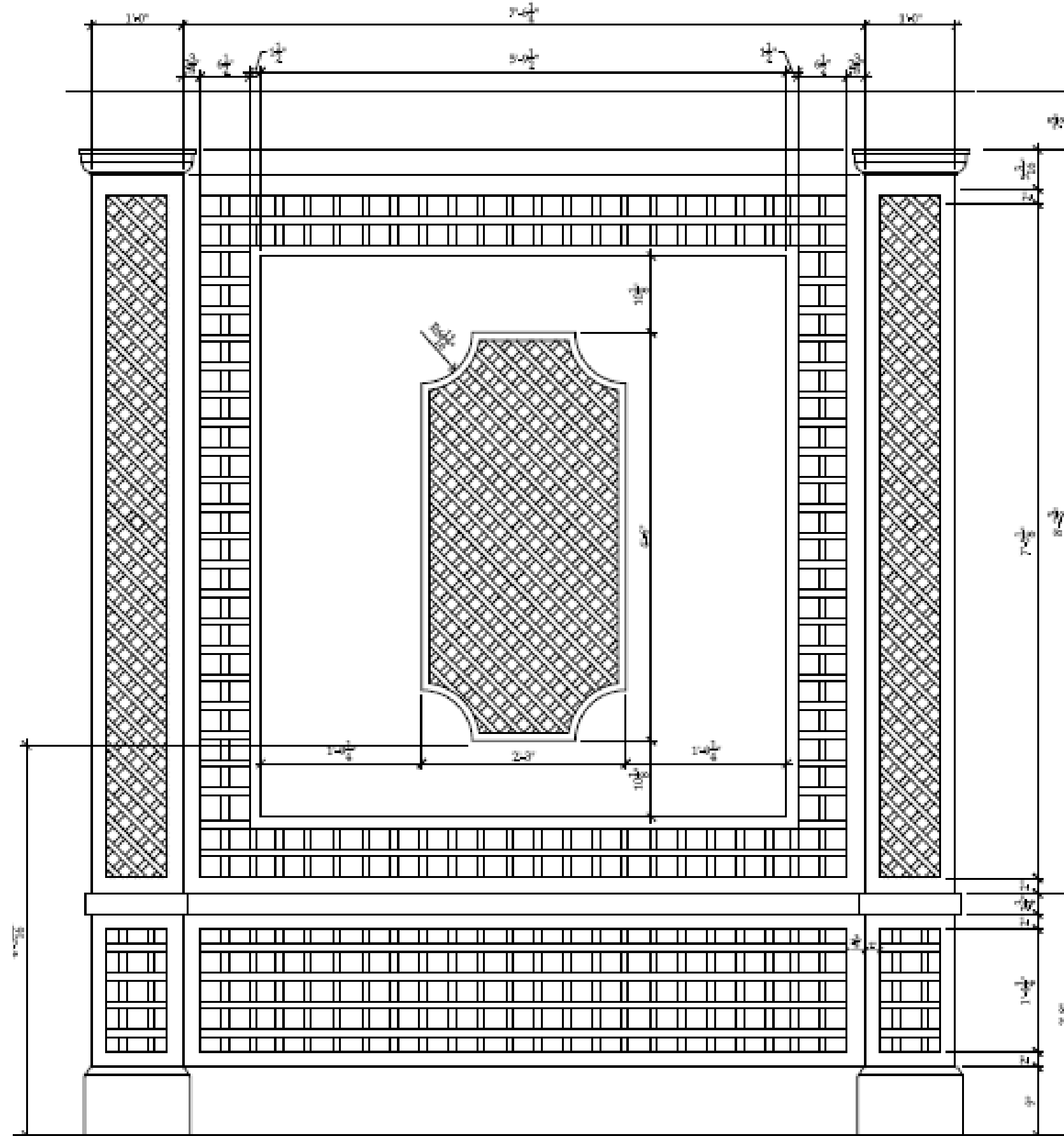


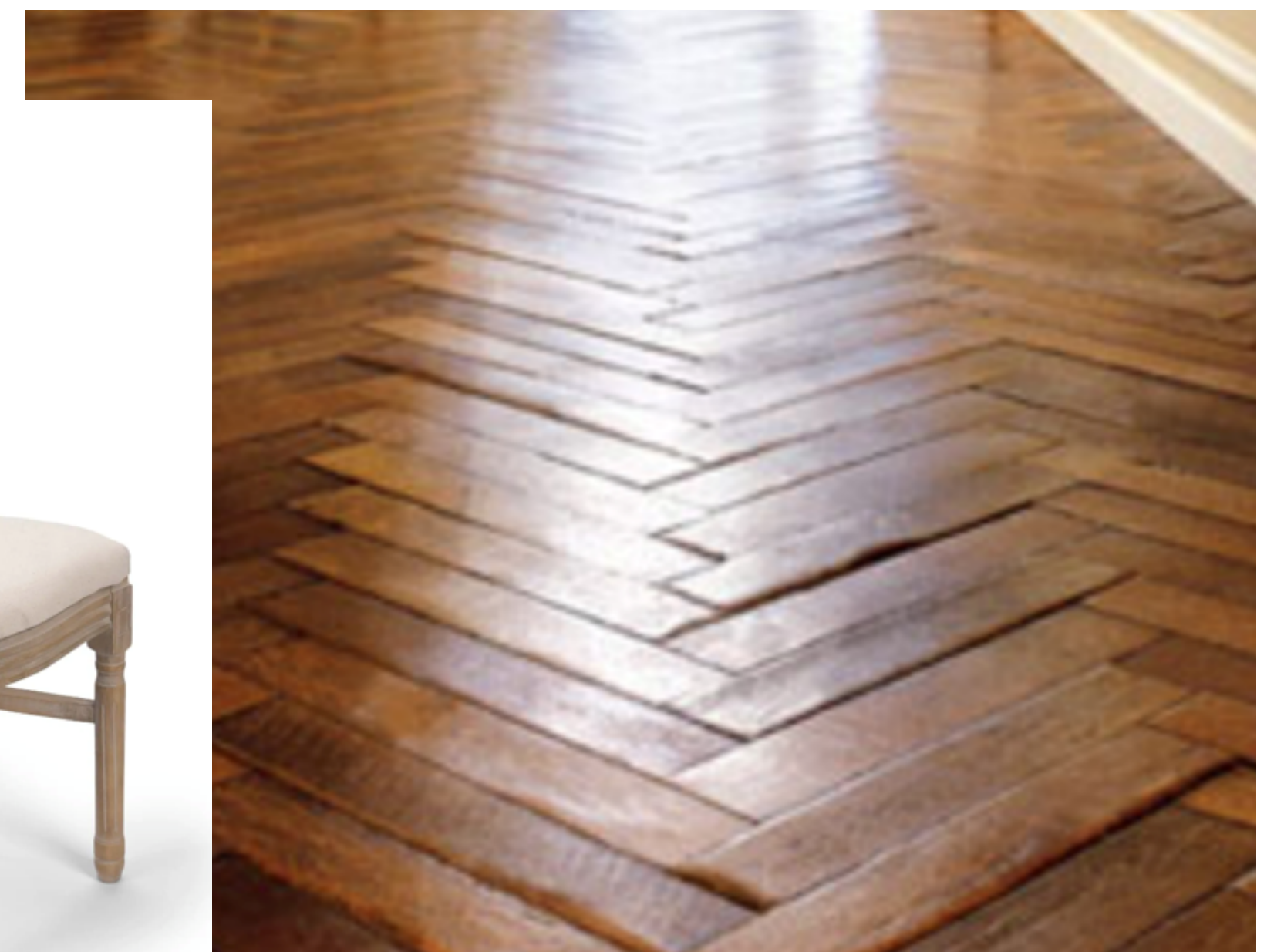
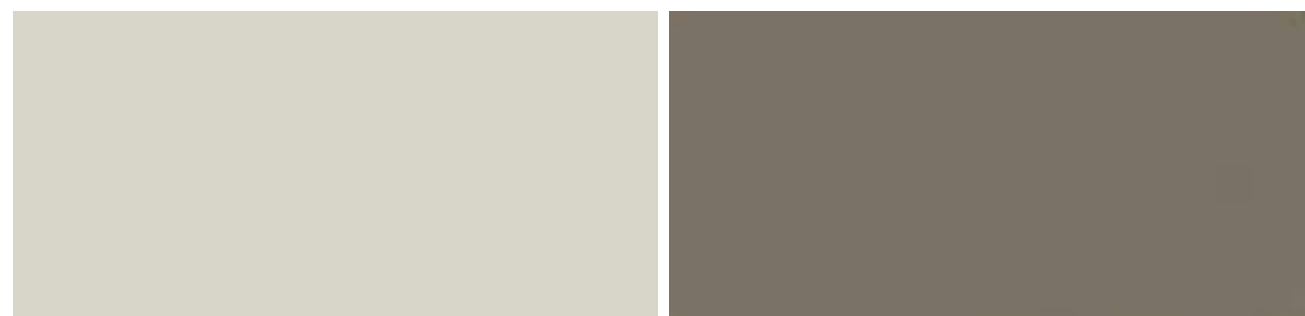


# Galerie de Galatoire

## Main Gallery



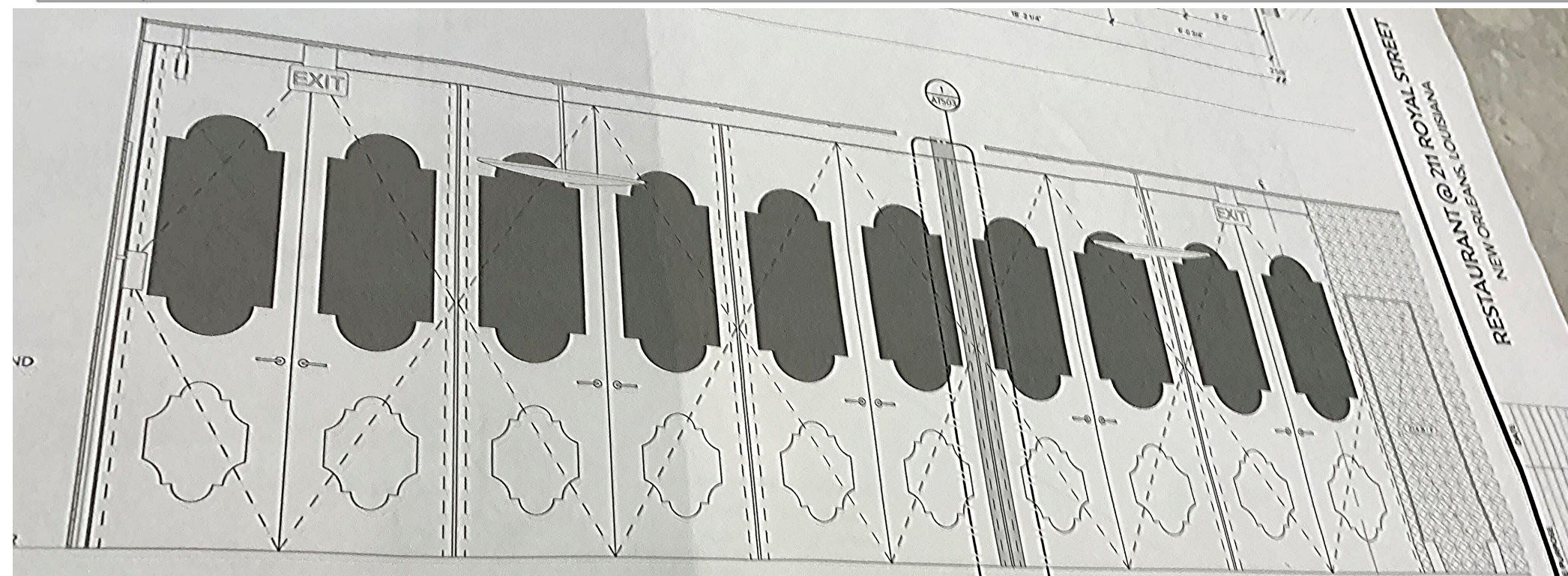
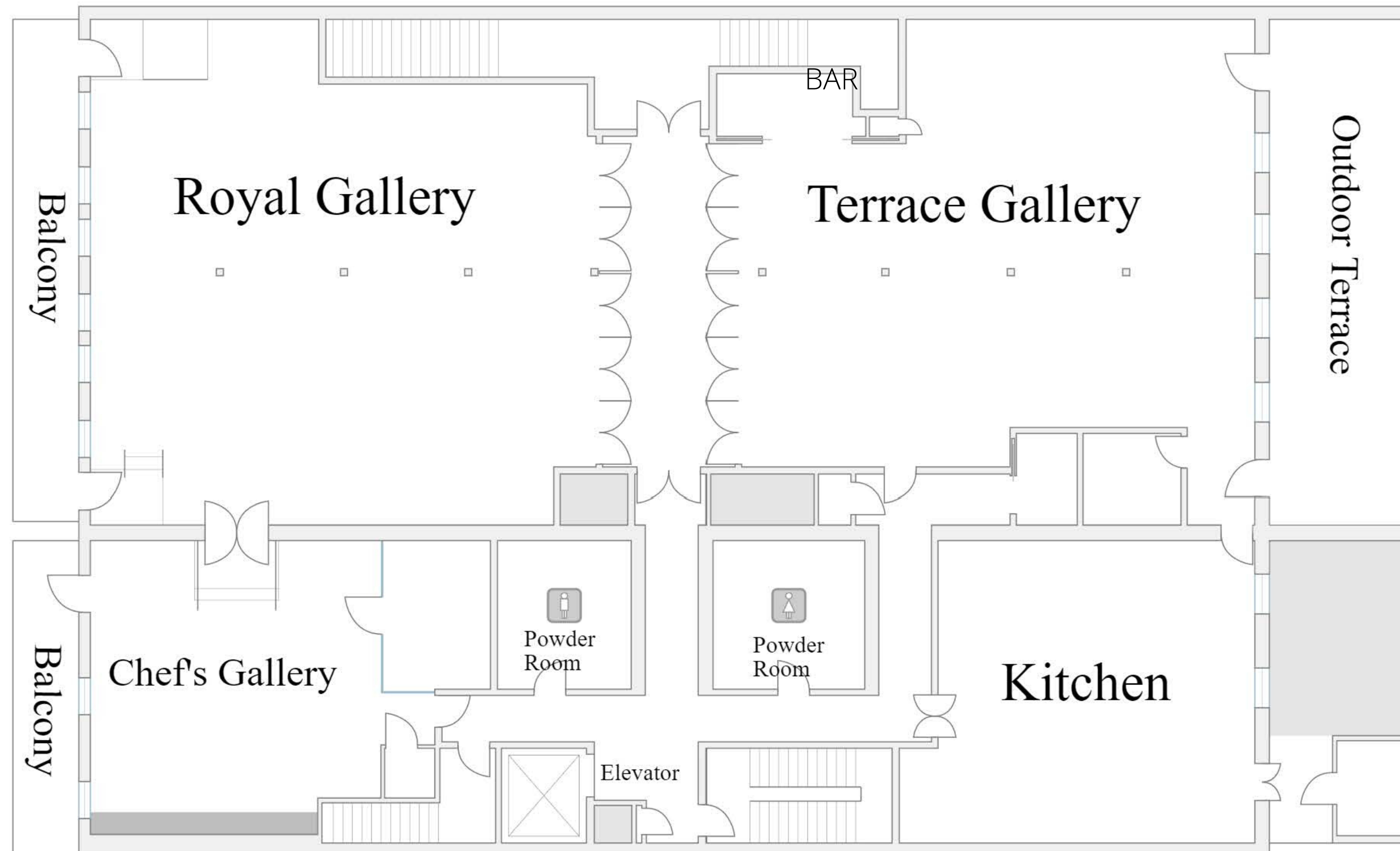
### Wall Design & Color Palette







# Galerie de Galatoire



**Doors along center hallway**

## AMENITIES

### Bar

- (1) Built-in Bar
- (2) Mobile Bars
- (1) Patio Bar

### AV

- (2) Backlit Projection Screens
- (2) Projectors
- (2) Wireless Microphones
- Built-in Ceiling Speakers

### Lighting

- Can Lights
- Chandeliers
- Wall Sconces
- Customizable Down Lighting in a variety of colors & patterns

### Tables & Chairs

- Induction Buffet Tables
- 30" Round High Boy
- 36" Round Caberet
- 48" Round
- 60" Round
- King Louis Chairs
- Floor Length Ivory Linens





# Galerie de Galatoire



## Royal Gallery

- 130 seated with cocktail space
- 180 seated max capacity
- 200 reception style
- \$13,000 food & beverage minimum

## Main Gallery

### *Royal & Terrace Gallery*

- 250 seated with cocktail space
- 340 seated max capacity
- 400 reception style
- \$25,000 food & beverage minimum

## Royal & Chef's Gallery

- 150 seated with cocktail space
- 180 seated max capacity
- 250 reception style
- \$16,000 food & beverage minimum

## Terrace Gallery

- 120 seated with cocktail space
- 160 seated max capacity
- 200 reception style
- \$12,000 food & beverage minimum

## Chef's Gallery

- 30 seated with cocktail space
- 40 seated max capacity
- 50 reception style
- \$3,000 food & beverage minimum

## Galerie de Galatoire

### *Main & Chef's Gallery*

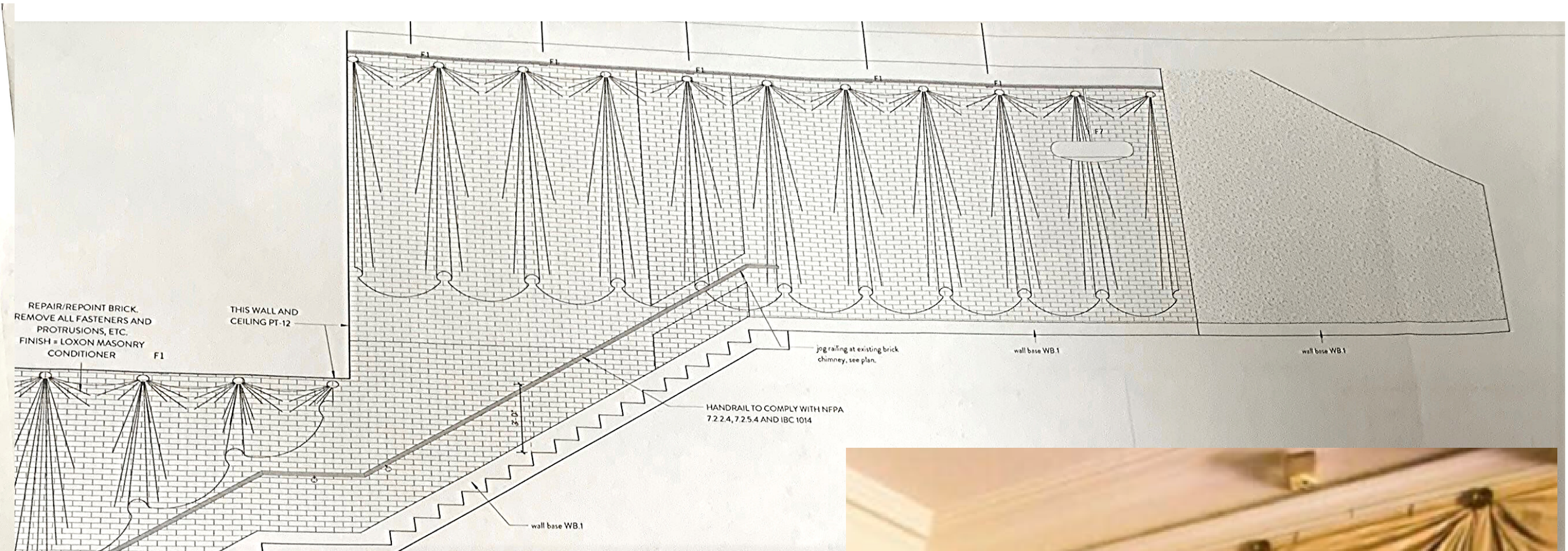
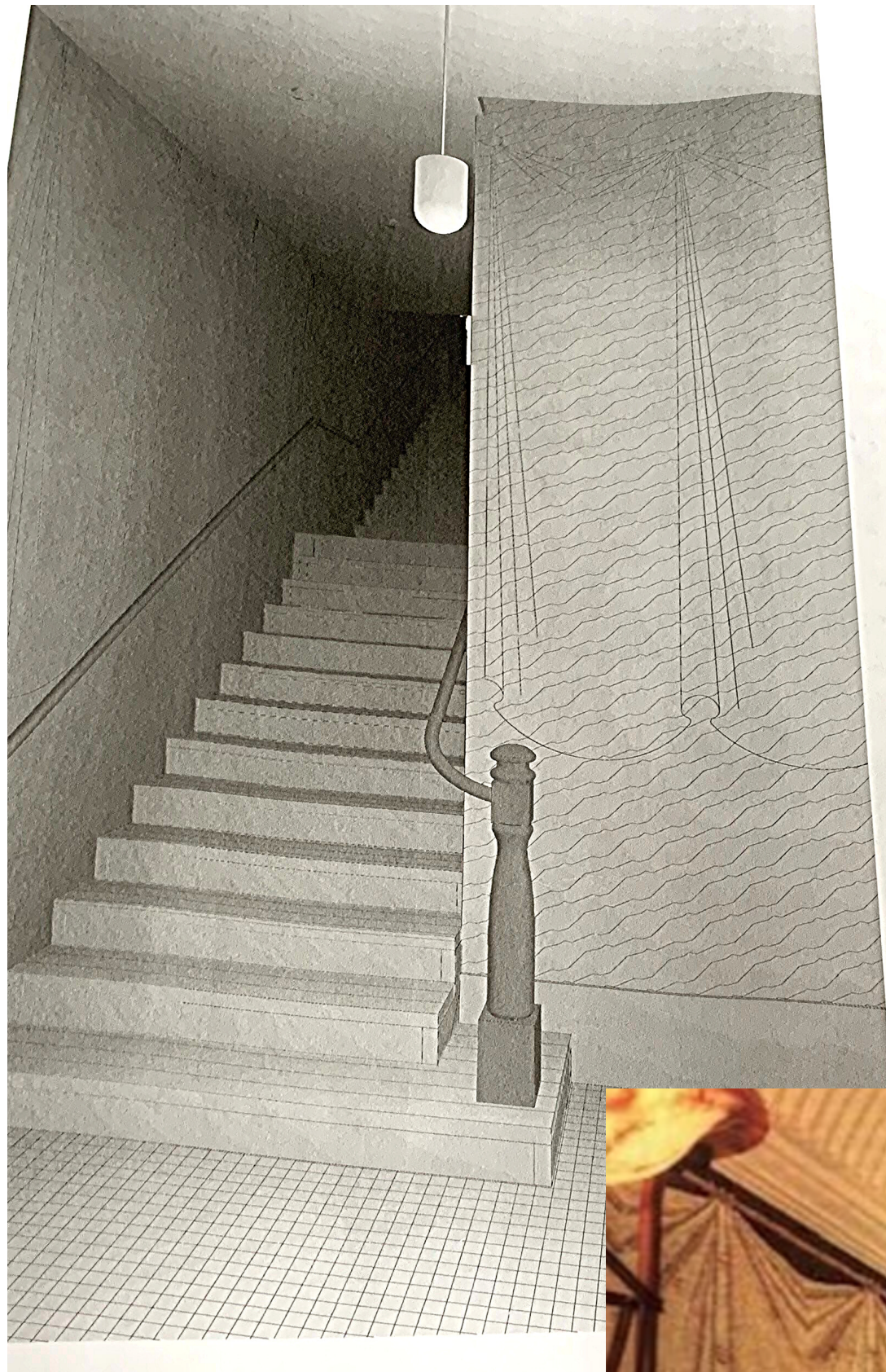
- 270 seated with cocktail space
- 380 seated max capacity (seating in all three spaces)
- 450 reception style
- \$28,000 food & beverage minimum





# Galerie de Galatoire

## Entrance







# Galerie de Galatoire

## Chef's Gallery







# Galerie de Galatoire

## Outdoor Terrace

